



POLY FILMS

4
YEAR
warranty

We carry a variety of UV-stabilized greenhouse Poly Films to ensure you get the right product for your needs. Poly Films protect your plants for better blooms and brighter colors. They can provide superior insulation for your greenhouse, reduce condensation, or retain infrared rays for increased warmth in your growing structure. Whatever you're looking for, our helpful sales team can assist you in selecting the right poly for your needs.

Available in sheet or tube. Custom cut to any length and no minimum order. Call for volume pricing.

GT-4 6 mil Clear				
Features excellent light transmission, long product life and easy installation.				
Tube widths (feet)				
12	16	20	22	25
14	18	21	24	26
Sheet widths (feet)				
12	20	25	36	48
14	21	26	40	50
16	22	28	42	52
18	24	32	44	

GT-55% 6 mil White				
Lower greenhouse temperature by reflecting solar heat. Use where cooling is a priority such as orchids or garden centers.				
Tube widths (feet)				
16	18	20	21	24
Sheet widths (feet)				
16	21	36		48
18	24	40		
20	32	42		

GT-IR/AC 6 mil Clear				
Provides infrared retention to maintain warmth and anti-fog additives for improved light transmission in colder climates.				
Tube widths (feet)				
12	16	20	22	25
14	18	21	24	
Sheet widths (feet)				
12	20	25	40	50
14	21	28	42	
16	22	32	44	
18	24	36	48	

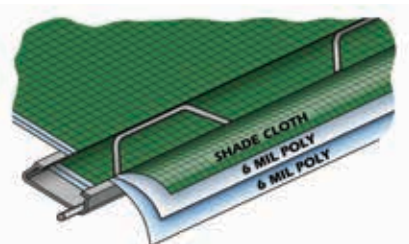
WIGGLE WIRE®

Imitation is the sincerest form of flattery but don't be fooled by inexpensive, imported spring wire. Look for our trademark Wiggle Wire® brand for the quality that has proven to be a low-cost, effective way to attach polyethylene or shade material to greenhouses. Just install the aluminum base and you can attach multiple layers of polyethylene and/or shade cloth to your structure. Proudly made in the USA.

- The aluminum base won't rust, and easily bends over most hoop configurations for seamless installation
- The stainless steel wire is heavy-duty and will stand up to repeated installations
- Install up to three layers of plastic and shade cloth without needing another fastening system
- Because of its high quality and durability our Wiggle Wire® can be reused after the first installation



Part #	Description
WWBASE78	6'- 6" aluminum Wiggle Wire base track
WIGLWIRE10	6' - stainless steel Wiggle Wire - 10 Pack



Go to www.poly-tex.com to see our new Wiggle Wire bundle packages.

REPLACEMENT PARTS



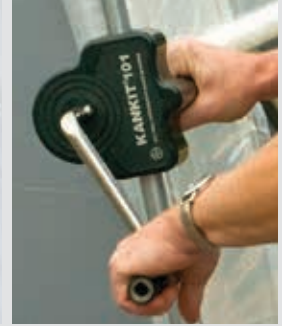
Preassembled Roof Inflation Kit
Includes Inflation blower, 3"x 2' flex tubing, air transfer gasket, blower mounting bracket
PT2415



2' Jumper Kit
Includes 3" x 2' flex tubing and two of each of the following: air pipe flange and 3.25 hose clamp
PT2416



Self-Locking Gear Box
MV1000



Poly Patch Tape
PT2440 - 4"x 10'
PT2441 - 4"x 48'

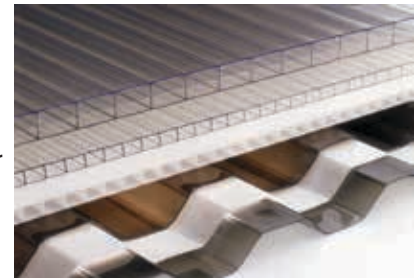


Roll-Up Clip
RC1010
Fits 1.315" OD tubing

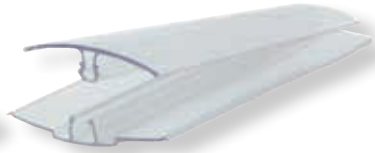
POLYCARBONATE

Structured & Corrugated Sheeting

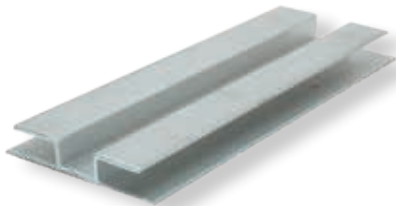
Our Polycarbonate possesses an impact strength 200 times greater than glass. Ten times greater than acrylic, it won't crack or split when cut or drilled, and bends over most hoop structures. Choose from 4' or 6' widths, up to 48' in length.



Aluminum "U" profile-20' length
PL1020



"H" profile cap-24' length,
"H" profile base-24' length
PL1010/1012



Aluminum "H" profile
8mm-12' length
PL1018



"H" profile 8mm clear-24' length
PL1000

Description	Part #
8mm clear sheeting-6' width, up to 48' lengths	SS1000
8mm clear sheeting-4' width, up to 48' lengths	SS1001
8mm white sheeting-6' width, up to 48' lengths	SS1002
8mm white sheeting-4' width, up to 48' lengths	SS1003
Corrugated sheeting-50" width, up to 48' lengths	SS2000
Note: Crating charge per lineal foot on longest sheet per order. FOB Janesville, WI	

Polycarbonate Accessories	
Install your sheeting correctly with the appropriate fastener.	
"H" profile 8mm clear-24' length	PL1000
"H" profile cap-24' length	PL1012
"H" profile base-24' length	PL1010
Aluminum "U" profile-20' length	PL1020
Aluminum "H" profile 8mm-12' length	PL1018
Foil Tape 1" x 50 yards	RR2439
#12 x 1" self-drilling screws	NB1804
#12 x 1 1/2" self-drilling screws	NB1805
#10 x 1 1/2" wood-mate screws	NB1807
#14 x 3/4" self-drilling screw	NB1806
1" neoprene bonded washers	NB1869